





Logo

Leaf symbolized the growth of science and innovation culture.

A flash of light through the leaves showed the spirit to always be the best partner and able to provide best services to costumers.

Contents

page

Remark by the Director	2
About Us	4
Gamatechno, UGM & Yogyakarta	6
Awards & Acknowledgements	7
Board of Management	8
gtSmartCity Solution	10
Academic Solution	13
Government Solution	16
Transportation Solution	18
Business Solution	20
Consulting & Training	22
Clients & Partners	24
People, Place & Culture	26
Partnership, Customer Relationship & CSR	28

copyright © 2017 Gamatechno

The material written in this company profile is fully owned by Gamatechno. Any form of dissemination shall not be permitted without the express permission of Gamatechno.

V 1.6 - Digital - 2017

Remark by the Director

Muhammad Aditya A. N.

"With gtSmartCity Solution, Gamatechno is committed to taking an active role in improving the lifestyle of urban society based on technology"





Assalamu'alaikum Wr. Wb.

Our beloved customers and partners, it's already 12 years of Gamatechno's providing solution for Indonesia. The time period is certainly not a short journey, especially for us, a companies built from the spirit of young professionals. Lots of lesson we get throughout the product development process and cooperation with all the customers and partners who always faithfully give us the opportunity to continue improving our self.

The various experiences we have, become our milestone of innovation that we always do throughout our business journey. This is the way for us to increase our value for all of our stakeholders.

Since 2014, Gamatechno has dedicated a solution we call gtSmartCity Solution to our customers and partners. This solution is an advanced innovation of the company's product and service portfolio that has been developed in years. The main idea of gtSmartCity Solution is how to build an smart city from the perspective of urban community with the value of less paper, less cash, less time and less complexity.

We design gtSmartCity Solution for 4 major industry segments: Education, Government,

Transportation and business, because these industry segments are the main segment for urban society. gtSmartCity Solution consists of appropriate technology products and solutions to make it easier for urban communities to engage in activities of education, government services, transportation and business.

With wide range of solutions, the use of complex technology is inevitable for product component and gtSmartCity Solution. So in addition to the innovation of web technology, mobile, smartcard, RFid, NFC, GPS and some other technologies we master, we are continuously working to enhance cooperation and collaboration with the parties to provide the best quality products and services for all customers and communities.

The principles of innovation and collaboration will be our based of work for providing value to industry and society. And we express our gratitude and appreciation to all customers and partners for the trust that has been given to us so far. With better collaboration, we are more confident to create higher value for all stakeholders while enhancing our role in the development of digital industry in Indonesia, even worldwide.

Wassalamu'alaikum Wr. Wb.

About Us

Gamatechno is a company focused on product development and information technology solutions for college segments, government agencies, transportation and logistics service providers, and business institution.



As a company engaged in the field of information technology solutions provider, PT Gamatechno Indonesia (Gamatechno) official was established on January 4, 2005, and has its head office in Yogyakarta. To improve the service to more than 280 clients across Indonesia which spread from Banda Aceh to Papua, in 2013 Gamatechno opened office branches in Jakarta and in 2015 opened a representative office in Denpasar.

Along with the development of the company, Gamatechno currently has a focus on product development and information technology solutions for the college segment, government agencies, transportation and logistics service providers, and lifestyle industries. Services that focus on 4 major segments is further defined as gtSmartCity Solution, which is a system-based solution and information technology to realize an intelligent city with less paper, less time, less cash and less complexity for improving community life.

For the college segment, excellent products Gamatechno is Gamatechno Campus Suite is an integrated information system for Universities consisting of various modular software designed according to college business processes start from management of student admissions, management of student lectures to graduate, management of campus assets covering assets, human resources, finance and asset goods, libraries, research and scholarships up dashboard system for campus leaders. For the government agencies segment, Gamatechno has some excellent products, including gtPerizinan (service management system unified licensing), gtAspiration (management system community aspirations), as well as gtGroupware applications (collaboration system and office archive). Other

than such products, Gamatechno as well serving the development of agency web site portal with the concept of citizen centric, as well development of various web-based applications others in accordance with the needs of the institution.

For the transport and logistics segment, Gamatechno developed several products superior for companies/organizations engaged in transportation services and logistics, i.e. gtFleets (information systems fleet management), GETS (Gamatechno Electronic Ticketing System), as well as applications mTransport (mobile app for information and public transport services).

In the lifestyle segment, Gamatechno develops backend application products and front-end for several sub industries including amusement parks and tours, center shopping and entertainment, microfinance, and health industry. Multiple product portfolios. For this lifestyle segment, among others, eoviz.com (small & medium enterprises resource planning system on the cloud), mEvent (mobile app event information), and mCatalog (mobile app product catalog information).

In addition to the development of web-based applications, mobile, smart cards and some other update technologies packed in gtSmartCity Solution, Gamatechno also provides IT consulting services, IT audits, IT training and maintenance of digital content services and aggregation systems.

As a college-based company, Gamatechno has a competitive advantage not owned by other

companies, i.e. resources and research assets owned Universitas Gadjah Mada as the base development and innovation of products and services Gamatechno in order to create an appropriate solution for the community. And to complete the service total to customers and partners, right now Gamatechno has a subsidiary namely PT Aino Indonesia engaged in the field smart card technology, RFID, and mobile NFC.

Vision 2020

To be a market leader in national smart city development

Mission

In order to achieve the vision and goals company, Gamatechno describes the company's missions as follows:

1. Accommodate needs, resources, and the goals of Gadjah Mada University
2. Creating a smart society through IT products used every day
3. Participate actively in the global community to build a digital creative industry



Gamatechno, Universitas Gadjah Mada and Yogyakarta

Gamatechno and Universitas Gadjah Mada

Gamatechno is an integral part of the vision and mission of Universitas Gadjah Mada (UGM) as one of the oldest, largest and best universities in Indonesia to implement Tri Dharma Perguruan Tinggi consisting of Education and Teaching, Research and Community Service. The products and services developed by Gamatechno are the realization of UGM's real role in solving the problems and fulfilling the existing needs in society both nationally, regionally and internationally.

Formally Gamatechno is owned by UGM through majority ownership in the name of PT Gama Multi Usaha Mandiri, a holding company owned by UGM who assumes responsibility to manage the business professionally on knowledge assets owned and produced by UGM. Not a few of Gamatechno's products and services are the result of UGM research collaboration, so that it can be said that Gamatechno is one of practical representation of 18 Faculties and 27 Study Centers owned by UGM.

Gamatechno, from Jogja to Indonesia and worldwide

Jogja is one of the most important cities in the political and historical journey of the Unitary State of the Republic of Indonesia. Until now, Jogja city is associated with many positive things such as education city, student city, tourism city, cultural city, culinary city, batik city, palace city, and many more. Noted there are hundreds of educational institutions in Jogja, this became one of the factors driving the formation of Jogja community culture is open-minded, innovative, creative and competitive but still humble and always able to appreciate others.

As a company that was born and grew in Jogja, Gamatechno consistently maintains and cultivates a positive culture that is there to be synergized in every delivery of products and services so that the company is expected to provide maximum value to all stakeholders.

Based on the cultural and historical perspective mentioned above, as a company engaged in the field of information technology Gamatechno committed to play an active role in realizing the vision of Jogja Cyber Province become the regional ideals through the development and implementation of digital products to improve the order and quality of life of the community as well as for Becoming a pioneer of digital industry in Jogja and all over Indonesia. Further along with the openness of the global era that eliminates the geographical barrier, this provides opportunities as well as challenges for Gamatechno to take part in the global IT industry arena.

From here is born a spirit ... Gamatechno, from Jogja to Indonesia, and worldwide!

Certification & Award



ISO 9001:2015

Provision of Software Development, Delivery and Maintenance Services
(i.e. Smart Campus, Smart Government, Smart Transportation,
Smart Lifestyle, Smart City Solution)

Registration No. QA165142
First issued on 26 August 2016



The Ministry of Communication & Information RI

Indonesia ICT Award 2007
1st Winner R&D Category
Smart Mass Transit System

Asia Pasific ICT Award 2007
Honored Contestant

Indonesia ICT Award 2008
5 Best Nominee
gtAkademik - E-Education Category
gtPerijinan - E-Government Category



The Ministry of National Education RI

HILINK - JICA 2010
MSTT UGM-Gamatechno-Dishub Prov. DIY
On Bus Smartcard Ticketing System

HILINK - JICA 2011
MSTT UGM-Gamatechno-Dishub Prov. DIY
Smartcard Ticket Vending Machine



The Ministry of Research & Technology RI

The Best 101 Innovation of Indonesia 2009
The Most Prospective Innovation 2009
Data Integration & Smartcard Technology

National Excellence Research 2010
TE UGM - Gamatechno
Mobile RFId on BRT



Indonesia Mulai 4.0

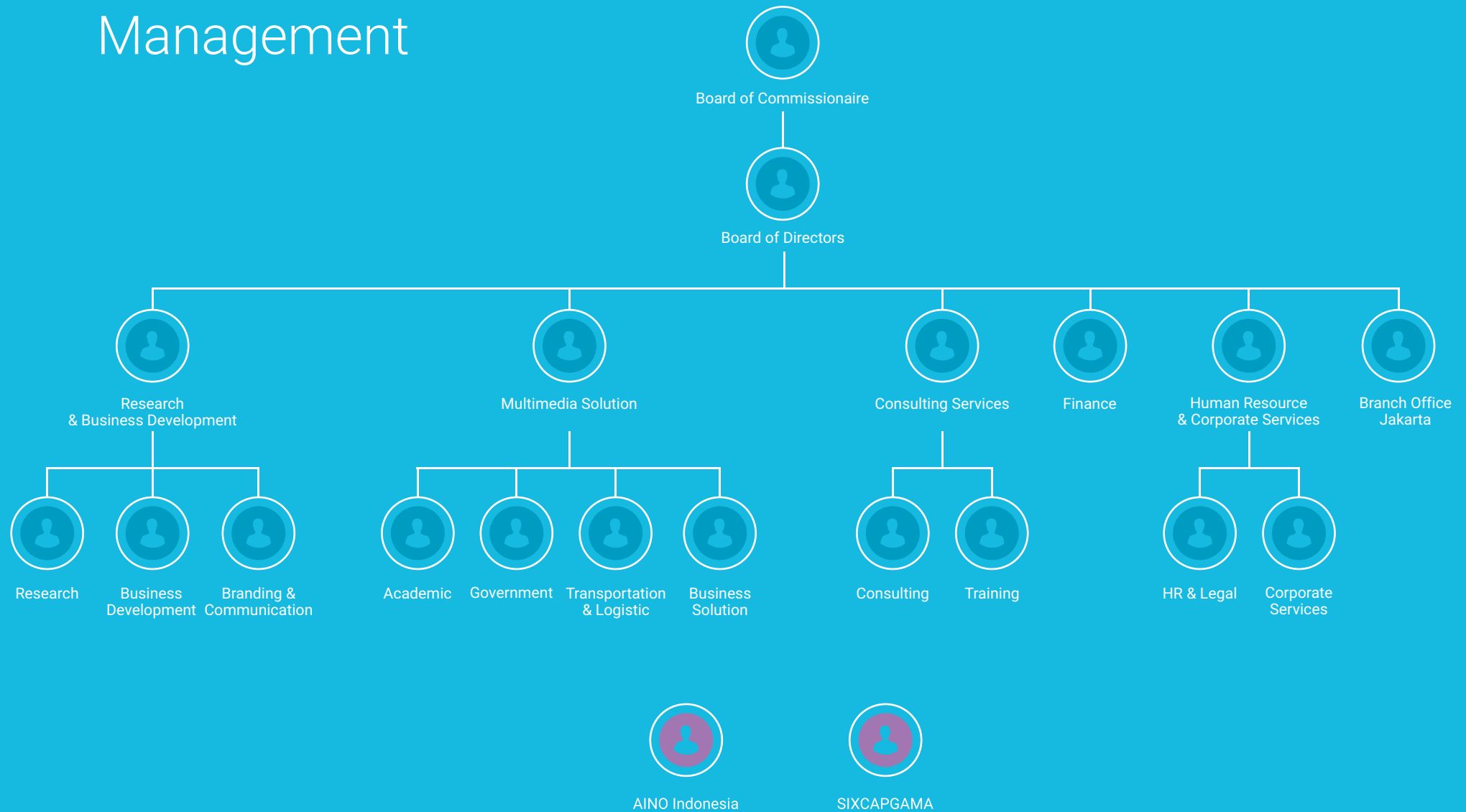
Microsoft - USAID 2013
Winner - gtPerijinan



Rekor Muri 2012

BRT (Bus Rapid Transit)
menerapkan eTicket Multi Bank

Board of Management





Duduk : Muhammad Aditya A. N., Adityo Hidayat St. Majo Kayo

Berdiri : A. Toto Priyono, Andri Kushendarto, R. Sumarwan Ismunu, Nugroho Setio Wibowo, Nanang Ruswianto, Reni Nurika Andayani, Novan Hartadi, Triasmono, Awaludin Zakaria, Alvonsius Albert Nainupu, Taufik Suryawan Edyna

President Commissionaire

Dr. Didi Achjari, SE, M. Com., Akt

Commissionaire

Widyawan, ST, M.Sc, Ph.D

Commissionaire

M. Afrizal Hernandar, S.T., MBA

President Director

Muhammad Aditya A. N.

Director

Adityo Hidayat St. Majo Kayo

Research & Business Development General Manager

Novan Hartadi

Multimedia General Manager

Nanang Ruswianto

Consulting & Training General Manager

Nugroho Setio Wibowo

Finance General Manager

Reni Nurika Andayani

Human Resource & Corporate Services General Manager

R. Sumarwan Ismunu

Academic Solution Manager

Awaludin Zakaria

Government Manager

Taufik Suryawan Edyna

Business Solution Manager

A. Toto Priyono

Transportation & Logistic Manager

Satrya Wira Wicaksana

Human Resource & Legal Manager

Andri Kushendarto

Consulting Services Manager

Triasmono

Business Development Manager

I.G.P. Rahman Desyanta



In the next decades, the population in big cities will be much improved. The initiative to realize smart city is needed to address these challenges. With a variety of definitions, smart city has the following characteristics: resilient city (efficient), efficient city (efficient), sustainable city (sustainable), eco city (environmentally friendly), liveable city (worth living) and others.

The urban community is the main stakeholder, whereas that information technology, infrastructure and city managers become enabler factors that can not be separated in the process of realizing the vision and mission of the smart city.

As a company that provides a variety of information technology solutions, Gamatechno plays a role in realizing the concept of smart city. Various multi-segment solutions developed by Gamatechno will deliver services that offers benefit and solve user's problem.

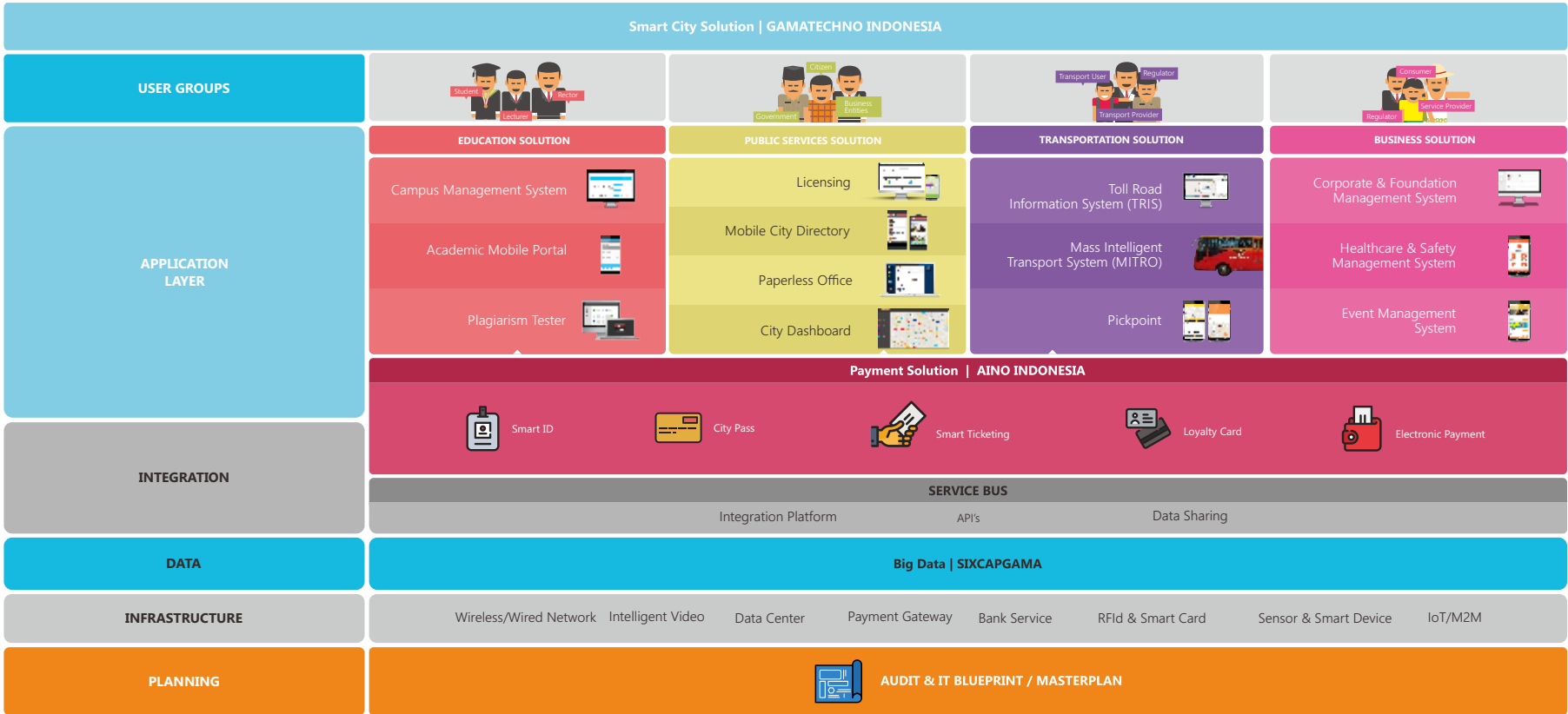
The collections of Gamatechno multi-segment solution called gtSmartCity Solution, is the implementation of information technology systems and focus on 4 segments of living ecosystems: education, government services, transportation and logistics industries, and business institution. Gamatechno's solution create a smart city for its users by providing benefits in terms of paper reduction, simplification of less complexity, less time-efficiency, Cash).





SmartCity Solution
less
 paper, time, cash, complexity

Gamatechno SmartCity Solution Architecture



Of the many aspects and urban activities, Gamatechno focuses on developing solutions for 4 major segments of academic solutions, government services, transportation and logistics services, and the lifestyle industry. Community activity in these segments dominates everyday life in the cities.

Solutions from Gamatechno and its subsidiary, PT Aino Indonesia, incorporated in the umbrella brand gtSmartCity Solution, are end-users applications directly related to their users.

In the perspective of a smart city solution architecture, end-users applications from

Gamatechno together with other intelligent solutions and application platforms, as well as infrastructure support will result in the integrated solutions required by smart cities.

Gamatechno actively cooperates with strategic partners to provide value added products as well as complement existing solutions.

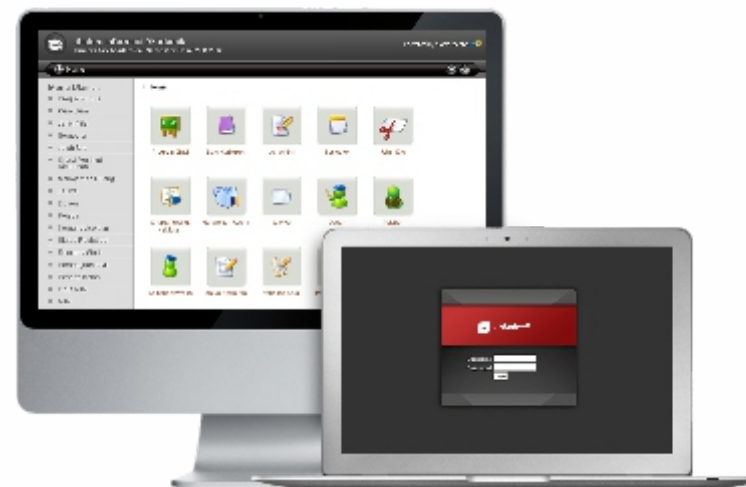


Academic Solution

College is an institution that has much management complexities, standard report responsibilities and another submissions that should be fulfil. On the other hand, in different design of colleges like Academy, Polytechnic, Institute and University will bring much different academic rule and operational and financial patterns.

Based on the experience of system implementation in dozens of colleges in Indonesia, Gamatechno developed Gamatechno Campus Suite which is an Integrated Information System to manage all administrative activities and academic college, ranging from student registration process, lecture management, resource management, to dashboard system that help leader Decision-making process.

To facilitate the implementation system, Gamatechno Campus Suite is developed with modular design and grouped into several application groups: Academic Management System, Resource Management System, Community Management System, Knowledge Management System, and Executive Dashboard System. With a complete and integrated features and equipped with various products that adopt the latest technology, Gamatechno Campus Suite is the perfect solution to ease and convenience of administrative management academic system. Gamatechno Campus Suite



Gamatechno Campus Suite

**Integrated Information System to manage
academic administration and management**



Academic Management System

Academic Management System manages administrative and academic management in the university .

ad *gtAdmission*

reg *gtRegistration*

ak *gtAcademic*

Pem *gtPayment*

@ *mCampus*

fe *gtFeeder*



Resource Management System

Resource Management System manages all resources in the university

bu *gtBudgeting* **as** *gtAset* **fin** *gtFinansi* **skp** *gtSKP*
sdm *gtSDM* **plo** *gtPLO* **blu** *gtBLU* **bkd** *gtBKD*



Knowledge Management System

Knowledge Management System manages knowledge asset (such as academic library, academic works integrity and research activity) .

pus *gtPustaka* **ris** *gtRiset*
pla *gtPlagiarismTest* **lib** *mLibrary*



Community Management System

Community Management System manages scholarship information database and career, also social media for student, alumni and lecture.

be *gtBeasiswa* **ak** *gtAlumniKarir*



Executive Dashboard System

Executive Dashboard System is a report integration whole operational application module to provide executive information as support facility to making academic management decision.

bi *gtBI*



Payment Integration

Point to Host (P2H) and Host to Host (H2H) with Banking (MT100,MT940, ISO8583)

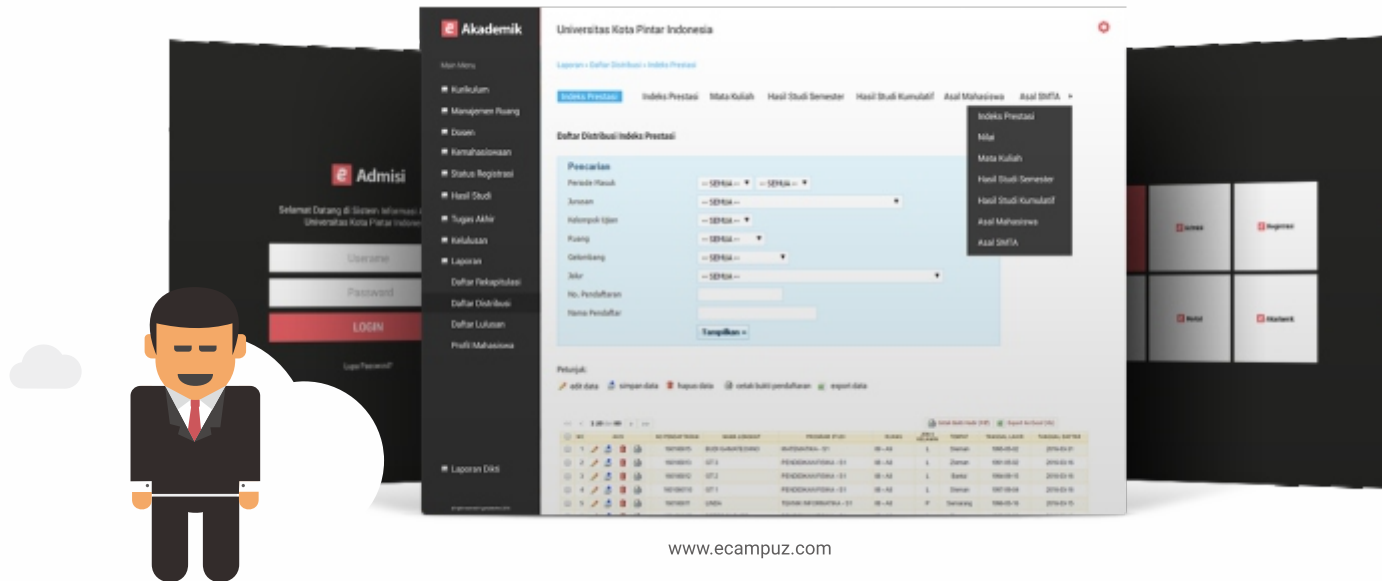


Single ID Card

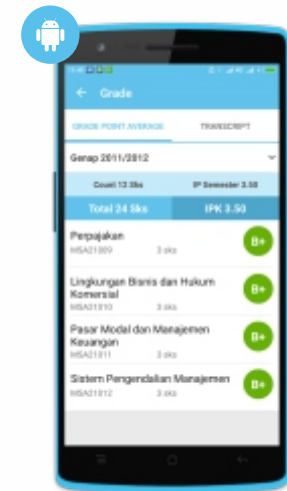
Single ID Card is a concept and implementation which integrated with Smart Card Technology as a single card for student identity, library member, parking access, presence systems. Room access, ATM, electronic money and others.

Add on Solution

- SMS Gateway is exam announcement, scholarship information and job vacancy
- RFID to identify library collection



www.ecampuz.com



www.mcampus-app.com



eCampuz is a cloud version of Gamatechno Campus Suite, which is an integrated information systems to manage administration activities and academic with Subscription Business Model.

eCampuz consists of four major modules, which are:

New Student Registration, Student Payment, Admission and Administration Academic Management Modules.

eAdmission

Registration Student Information System is a portal to register examination and it's payment through Bank Partner channels.

ePayment

Student Payment Information System is a solution to integrate student payments and its reporting with Host to Host (H2H) or Point to Host (P2H) payments.

eAcademic

Applications for data management and academic administration, supports PDPT reporting format (Higher Education Database).

eRegistration

Applications to manage student registration, payment status and registration status.

Feeder

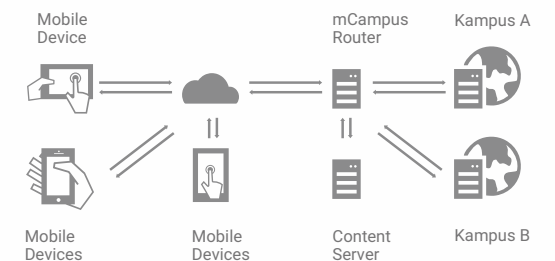
Application to facilitate University report to PDDIKTI forlap. Existing data in eCampuz database can be sent to PDDIKTI forlap easily without any further effort.



The academic portal in the mobile app version, is available free of charge as a complement to access information for students.

mCampus provides user academic data from campus database with reliable data security.

mCampus Architecture





Government Solution

Today the government has a huge challenge in providing better public services for the community.

According to our company's commitment to assist the government in improving public services based on information technology, Gamatechno developed various application products for government institution. These products are developed as Government Gamatechno Solutions. With a variety of technology that is mastered, Government Gamatechno solution is not only limited to applications that have been developed alone but also accommodate the specific needs of government agencies.



gtPerizinan

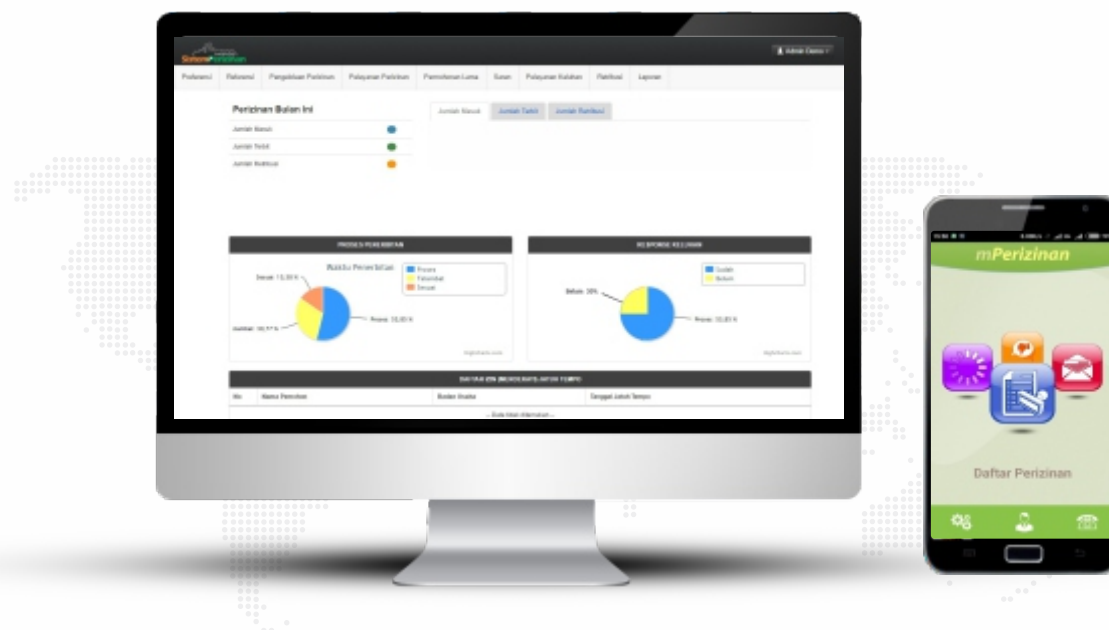
Integrated Licensing Management Information System

Information systems to support licensing services become clearer, transparent, quick and easy.

GtPerizinan is designed with the principle of customizable (easily adjusted in terms of contents data in every local government), and in accordance with the rules contained in the Regulation of the Minister of Home Affairs Number 24 of 2006 and Number 20 of 2008.

mPerizinan

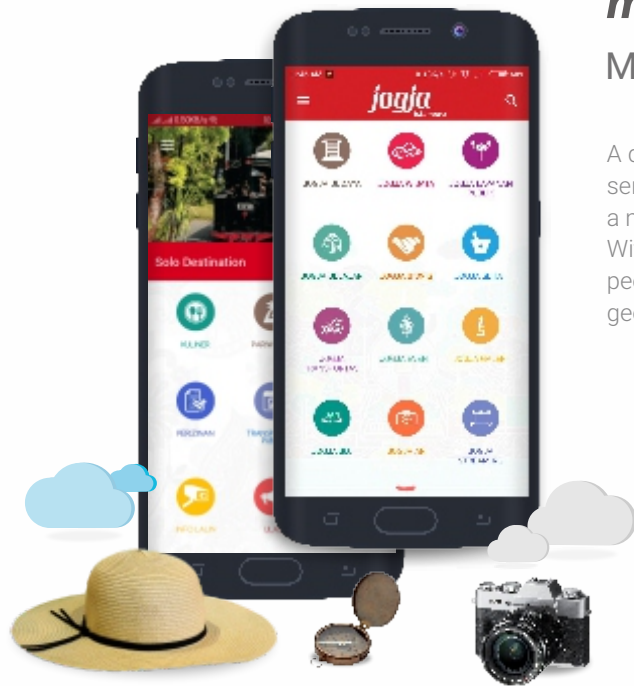
Applications to access licensing management information system via mobile devices.



The Ministry of
Communication & Information RI
Indonesia ICT Award 2008
e-Government Category



Winner IMULAI 4.0
Microsoft - USAID 2013



mCity

Mobile City Directory

A digital information portal that serves as an "entrance" to an area and a media branding for local tourism. With mCity apps, tourists and local people will get detail information with geofencing feature easier.

gtAspirasi

Complaints and Feedback Management Information System

The information system is dedicated as a media to accommodate and manage complaints and suggestions from the public.

GtAspirasi process mechanism support multi channel access, so this app can be accessed from web / portal, phone, fax, mail, SMS and email.

dashboardGovernment

Government Reporting Information System

Information systems designed to provide information quickly and easily without the assistance of intermediaries from various sources (internal or external) to government organizations.

With the Dashboard Government Information System, a Government executive can identify strategic issues and explore information to find the root causes of those issues and make policies to address them.



gtPLO

Collaboration and Memo Management System

A system developed to facilitate the recording of correspondence within the environment of an institution, and the management of incoming mail, disposition, and digitalizing memo .

This information system also supports multi channel concept, so it can be accessed through website, email and SMS.



Transportation **Solution**

Transportation problems will have a huge impact on the urban community's living due to transportation is one of the main drivers of the economy.

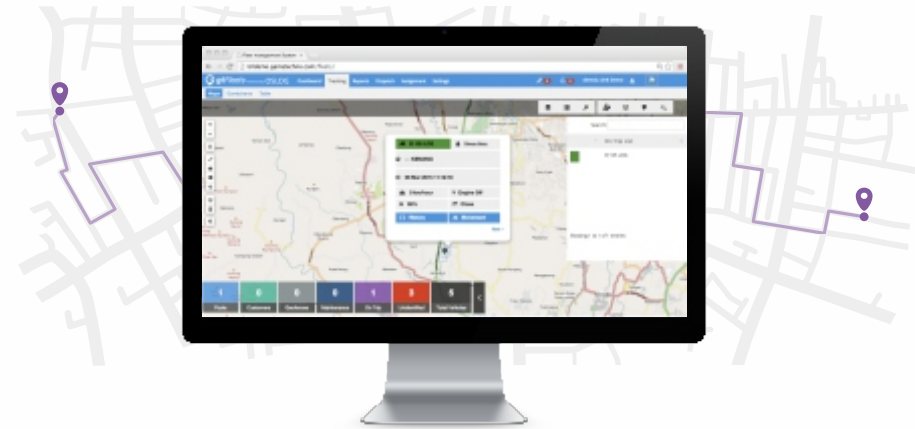
The use of information systems and technology in the field of transportation will provide many solutions to solve problems that often occur especially in aspects of fleet management, accident reduction, time efficiency, resource savings, transaction convenience, and the convenience of transportation service users.

As a manifestation of Gamatechno's commitment to play a role in addressing transportation problems, Gamatechno developed a Transportation Solution consisting of an application system for companies and toll road operators and public transport as well as products aimed at providing convenience and convenience to the users of transportation services.



Mass Intelligent Transport System (MITRO)

Information systems in this group are provided to mass transit providers, both private and government, it's use for managing fleets, drivers, routes, and providing information to executives and passengers.



Fleet Management System

Information systems that can assist mass transportation operators to improve the efficiency of fleet management, drivers, and routes.

Asset Management System

Information systems for mass transportation operators to manage their movable assets and fixed assets.

Mass Transport Command Center

Information center to monitor fleet operations, drivers and routes.

Portfolio

Trans Metro Bandung, Moxter Mojokerto, Smart Passenger DAMRI, Sistem Reservasi PKB Dishub Pulo Gadung

Mass Transport Executive Dashboard

Access data information for the executive manager to monitor all operational activities, so that the decision-making process can be more quickly and accurately.

Smart Passenger System

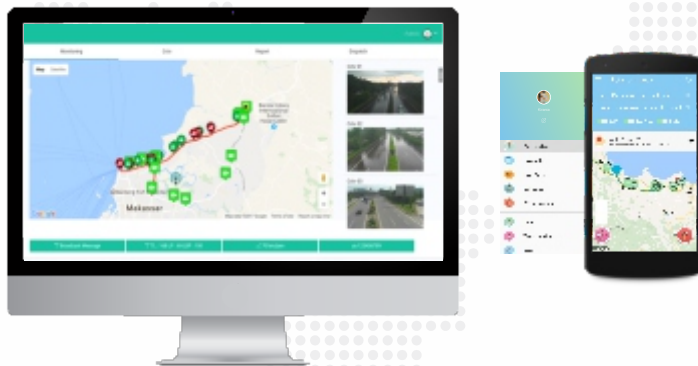
Passenger information system provides informative data through mobile and display applications in both transport and shelter modes, so can enhancing comfort, convenience, and positive impression for the public, especially users of public transport services.

EI-KIR

Information system for operators to conduct vehicle test (KIR test). There are 3 excellent features in the form a master (contains test items, testers, and retribution data), vehicle test and report.

Tol Road Information System (TRIS)

Information systems in this group are used by toll regulators, namely BPJT (Toll Road Regulatory Board) and toll operators, BUJT (Toll Road Enterprises) in conducting monitoring, management, and maintenance of toll roads in Indonesia. This information system consists of several support systems, namely Traffic Management System (TMS), Toll Road Payment and Transaction System, Report Center System (RCS), Toll Road Command Center, Toll Road Executive Dashboard, Mobile Patrol (m-Patrol) and i-Toll.



Traffic Management System

Information systems to monitor and regulate toll road traffic conditions, providing real-time information on toll road conditions to toll road managers.

Report Center System

Information systems used by operators and toll regulators to monitor incoming reports of toll road users through call centers and social media. In addition, TRIS-RCS can receive reports from toll road service units using the m-Patrol application.

Toll Road Command Center

Data monitoring and operational control center for toll road managers and supervisors, containing live CCTV view information, live event notifications, live toll statistics, construction or maintenance or development reports, and other supporting information.

Toll Road Asset Management System

Sistem informasi untuk melakukan inventarisasi aset pengelola jalan tol, baik aset bergerak ataupun yang tidak bergerak.

Toll Road Payment & Transaction System

Information system to monitor and manage toll road payment transactions.

Toll Road Executive Dashboard

Access information for executive managers and toll road supervisors who can monitor all activities in real-time, so the decision-making process can be faster and more accurate. Displays service information on toll roads that can be shared in the traffic dashboard, social media dashboard, and minimum service standard dashboard.

Mobile Application for Toll Road Operator (m-Patrol)

Applications for toll road managers to monitor daily operations of toll roads. This application is used by the toll road patrol officer who directly monitors the condition of toll road segment.

Mobile Application for Public (i-Toll)

Mobile applications that provide trusted information and communication access to toll road users for convenient travel.

Portfolio

Implementation of Toll Road Information System Traffic management system Makasar.



Consumer Transport Information System (CTIS)

Information Systems in this group is given to the public to facilitate the use of non-route public transport.

Pick Point

It is a mobile-based application platform to assist non-route transport operators in making reservations for both transporting people and goods.

Portfolio

Call Jack, Cak Trans, NAXI, Trans Metro Bandung, Trans Moxer Mojokerto, Smart Passenger DAMRI, Request System UP PKB Pulo Gadung, Traffic Management System Makassar, Electronic Toll Collection Surabaya

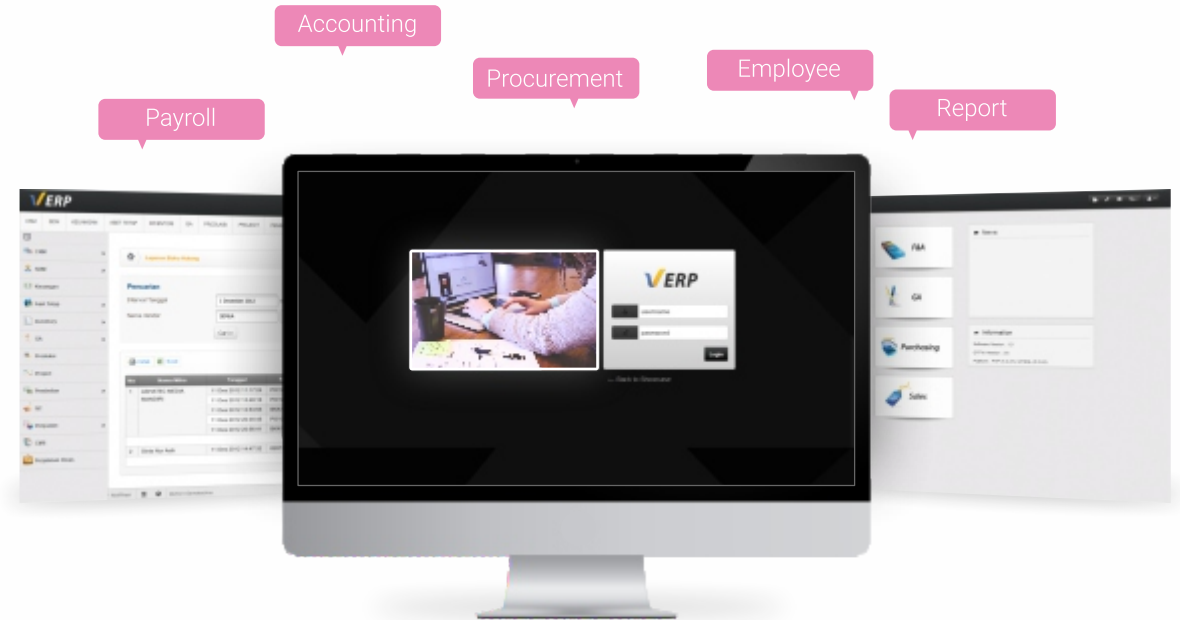


Business Solution

Eoviz HR is a cloud-based IT solution for an easy-to-use, integrated, and secure human resource management system. Eoviz HR provides ease in managing employee data, time management, attendance recapitulation, simplification of salary management and calculation of Income Tax, Leave and License Management and employee reporting. Through Eoviz HR the company knows the employee's condition and can take the right decision related to the HR strategy that will be applied to the company.

Benefit Application

1. SIMPLE, easy to use application is used to significantly reduce the failure rate of implementation.
2. SMART (integrated), integrated with other platform and solutions, such as smartcard, Doordaccess attendance system (Barcode Scanner, Finger Print Door Access Card and Smartcard).
3. SECURE, the application provides a sense of security, keeps users away from worrying about virus threats, loss, and data theft and collapse of information in the hands of the wrong person



gtERP

gtERP is a collection of information systems created to facilitate the management of companies more effectively and efficiently, anywhere and anytime.

Effective oversight of the company's overall performance process is an important aspect of improving company efficiency and productivity. We understand that in addition to performance efficiency, comprehensive information delivery for executives and company management on the conditions of employees, suppliers, customers and partners is another important element that is a prerequisite for a successful business.

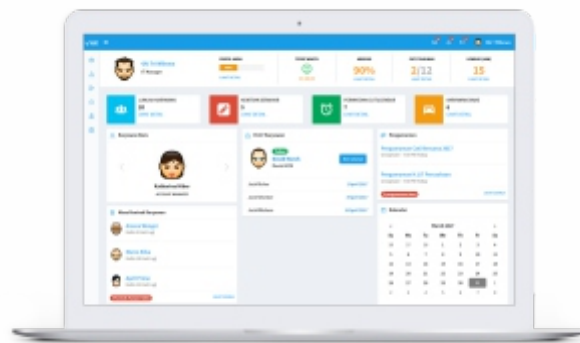
fin gtFinance
financial report, accounting, CoA

ga gtGA
employee, payroll, attendance

hr gtHR
employee, payroll, attendance

Easily Manage Your Business

Eoviz HR is a cloud-based IT solution for an easy-to-use, integrated, and secure human resource management system.

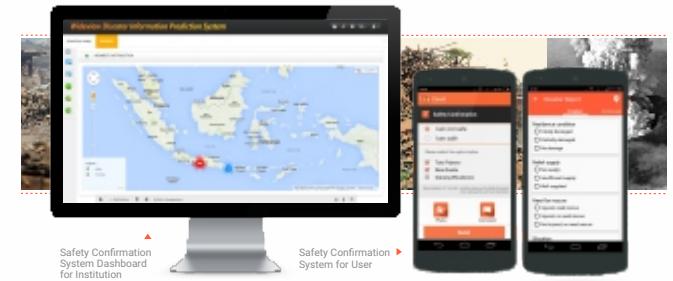


www.eoviz.com

Eoviz HR provides ease in managing employee data, time management, attendance recapitulation, simplification of salary management and calculation of Income Tax, Leave and License Management and employee reporting. Through Eoviz HR the company knows the employee's condition and can take the right decision related to the HR strategy that will be applied to the company.

Benefit Application

1. Simple
2. Smart
3. Secure



www.cared-app.org

safetyConfirmation

Information systems developed to facilitate public or community safety monitoring and identification of disaster sites based on geospatial data submitted by users. The resulting reporting system can assist the authorities in determining mitigation strategies or emergency response actions, including the process of providing assistance and evacuating victims more quickly and accurately. This application was developed jointly with OSAKA University, Gadjah Mada University and RESPECT



gtSMS Masking

SMS broadcast service uses masking ID that can be used for promotion and customer engagement in your business.

1. SMS Promo
2. SMS Discount
3. SMS Reminder
4. SMS Greetings
5. SMS Announcement

www.sms-masking.com

gtSMS Advertising

SMS based management information system that can be integrated with other systems.

1. SMS Info
2. SMS Feedback
3. Polling or quiz
4. One-Time-Passwords Authentication

www.sms-promosi.com

gtSMS Premium

"Premium SMS" is a paid SMS, where the SMS sender pays the entire service fee. This method is very popular in the world as a micro payment mechanism, because it is very fast and easy for consumers.

1. Polling
2. Quiz
3. On Demand Information

www.sms-polling.com



Consulting Training

Organize Masterplan and Blueprint Information Technology

Masterplan and Blueprint has a function to help institution to make a plan about information technology growth along with corporate vision and mission that generate the right implementation strategy which is effective and efficiency.

The plan begin with doing assesments, gap analytics, making decision to organize short term or long term Information Technology plan in that institution.

Consulting

1. Master plan dan Blueprint

Support institution to create planning development about Information Technology based on vision and mission's corporate to generate the best implementation strategy. Begin from assessment, gap analysis, decision making and long/short term plans.

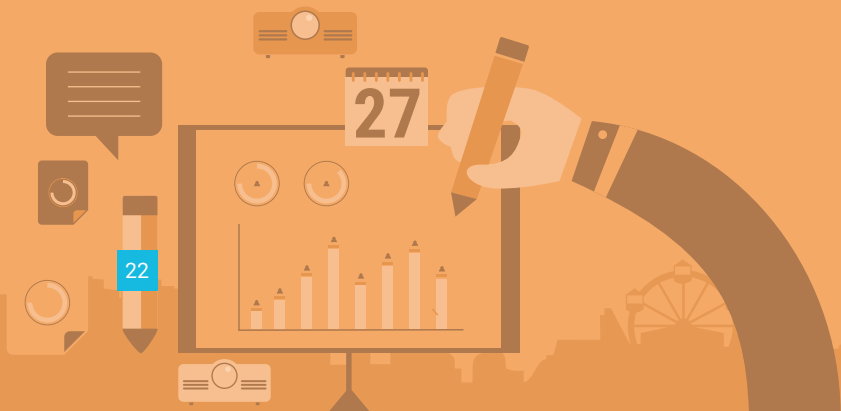


2. Audit IT

Support institution to planning development IT based on corporate vision and mission so that generate the right, effective and efficient implementation strategy. Begin from assessment, gap analysis, decision making and long/short term plans.

Portfolio:

- IT Blueprint / IT Master Plan Kejaksaan Republic Indonesia in 2015-2019
- Data Networking and Communication Provision, Direktorat Pengelolaan Informasi Administrasi Kependudukan, Direktorat Jenderal Kependudukan dan Pencatatan sipil
- Study Review Master Plan, Teknologi Informasi Komunikasi Direktorat Jenderal Perhubungan Udara , Kementrian Perhubungan Direktorat Jenderal Perhubungan Udara
- Business Plan Design and Grand Design Xplorin, Indonesia Tourism Development Coporation (ITDC)
- Big Data Executive Training Dinas Komunikasi dan Informasi Kediri



Training

1. Big Data Training Series

Support person to elevate skill and ability in Big Data techniques and knowledge. The result is participant get deep insight about Big Data operation and get best practice solutions to making decision from unstructured data.

PT TUV Rheinland Indonesia (TRID) is a private organization in the field of testing, inspecting and certification services and is a member of TUV Rheinland Group headquartered in Cologne, Germany. Previously, PT TUV Rheinland Indonesia named PT TUV International Indonesia which was established in 1996 and after several discussion and consideration PT TUV International Indonesia changed its name into PT TUV Rheinland Indonesia in 2010.

Big Data Administrator Training and International Certification

support person to elevate skill and ability about infrastructure and system administration related with server, system network, and configuration. The Result is participant get international certification.

Big Data Engineer Training and International Certification

support person to elevate skill and ability about development, construction, maintaining and architecture data in big scale. The Result is participant get international certification.

Big Data Executive Training and International Certification

support person to elevate skill and ability about smart city and implementation big data in every sector. The result is participant get the best practice and solution about smart city solution.

2. Security Training

- Making of IT Blueprint / IT Master Plan Attorney RI Year 2015-2019, Attorney General of the Republic of Indonesia and Office Kediri Information

3. GTFW Training

GTFW Certification

GTFW is a framework designed by Gamatechno to develop software. Experienced in 8 years in system information makes GTFW is the best programming framework. GTFW contains library bank plug and play to generate an application in minutes.

This training aimed to share knowledge about how easy create web application use GTFW whilst certification GTFW give an opportunity to enhance participant's career.

Transfer Knowledge

This program specially created for gamatechno's client in order to transfer the knowledge about Gamatechno's product. The goal of this training is giving and sharing provision and deep practice for Gamatechno's client to implement their products.

.....

This training is really interesting and the topic is outstanding also related with our needs. Especially when experienced field trip," Head of Kominfo Kota Kediri, Ir. Haris Candra Purnama, MM.

For more information:
training.gamatechno.com

Clients

Academic Institutions

Akademi Akuntansi YKPN
Akademi Farmasi Al Fatah Bengkulu
Akademi Manajemen Perusahaan YKPN
Akademi Teknologi Kulit
AMIK Bina Mandiri
AMIK Kartika Yani
APMD Yogyakarta
BP3IP
IAIN Sulthan Thaha Saifuddin Jambi
Institut Pertanian Bogor
Institut Sains dan Teknologi AKPRIND
ISI Denpasar
ISI Yogyakarta
MM UGM
MMTC-Deplu
Osaka University - RESPECT
Politeknik Negeri Banjarmasin
Politeknik Negeri Jakarta
Politeknik Negeri Lhokseumawe
Politeknik Negeri Pontianak
Politeknik Negeri Semarang
Politeknik Negeri Padang
Sekolah Tinggi Ilmu Pelayaran
ST Multi Media MMTc Yogyakarta
STAIN Curup
STAN
STEM Akamigas Cepu
STIE Dharma Andalas
STIE Musi
STIE YKPN
STMIK Akakom
STMIK Jendral A Yani
STMIK Potensi Utama
STMIK Teknokrat
STMIK Widya Cipta Dharma
UIN Alaudin Makassar
UIN Sunan Gunung Djati
UIN Sunan Kalijaga
UPT Perpustakaan Unit I UGM
UPU Perpustakaan UGM
Universitas Ahmad Dahlan
Universitas Al-Azhar Indonesia
Universitas Andalas Padang
Universitas Atmajaya
Universitas Bengkulu
Universitas Bhayangkara
Universitas Bung Hatta
Universitas Dian Nuswantoro

Universitas Flores
Universitas Gadjah Mada
Universitas Hasanuddin
Universitas Ida Bajumi
Universitas Indonusa Esa Unggul
Universitas Internasional Batam
Universitas Islam Bandung
Universitas Islam Indonesia
Universitas Islam Sultan Agung Semarang
Universitas Khairun Ternate
Universitas Kristen Duta Wacana
Universitas Lambung Mangkurat
Universitas Malang
Universitas Malikusaleh
Universitas Muhammadiyah Gresik
Universitas Muhammadiyah Maluku Utara
Universitas Muhammadiyah Yogyakarta
Universitas Mulawarman
Universitas Muria Kudus
Universitas Negeri Jakarta
Universitas Negeri Padang
Universitas Negeri Semarang
Universitas Negeri Yogyakarta
Universitas Negeri Papua
Universitas Palangkaraya
Universitas Pancabudi
Universitas Paramadina
Universitas Pattimura
Universitas Riau
Universitas Sam Ratulangi
Universitas Sanata Dharma
Universitas Sarjanawiyata Tamansiswa
Universitas Semarang
Universitas Setia Budi Solo
Universitas Siswa Bangsa Indonesia
Universitas Sriwijaya
Universitas Sultan Ageng Tirtayasa
Universitas Sumatera Utara
Universitas Syiah Kuala
Universitas Tarumanegara
Universitas Terbuka
Universitas Timor
Universitas Trunojoyo
UPN Veteran Yogyakarta
Yayasan STIKES Wira Husada
Yayasan Triatma Surya Jaya

Business Institutions

Bank BCA
Bank BNI
Bank BRI
Bank Jateng
Bank Mandiri
Bank Mega
Bank Riau
BPD DIY
BPR Bank Daya Ekonomi
BPR Bank Jogja
Braincode
British Petroleum
Coca Global
CV Canthing Intersolusi
CV Multimedia Learning Centre
CV Setiya
CV Sewu Kanca
CV Technoporia Indonesia
Datalink
Exelcomindo Pratama
Gajah Mada Medical Center
Gama Book Store
Gama Multi Usaha Mandiri
GEMPLUS
Goro
Handicap International
Imperium Happy Puppy
Indonesia Power
Indosat
Indosat Multi Media Mobile
JOB Pertamina Talisman Jambi Merang
Jogja Media Net
Jogja Tourism Yogyakarta
Luwes Group
Mandiri Sekuritas
Merapi Golf
Microsoft Indonesia
Natasha Skin Care
Nokia Indonesia
PB Karya Manunggal
Pertamina
Pertamina Foundation
Plaza Ambarukmo
Primagama
PT Askes
PT Askes Regional VI DIY-Jateng
PT Bank Pembangunan Daerah Jawa Tengah

PT BTPN
PT H&E Dermatech Indonesia
PT ION International
PT Kalbe Farma
PT Kaltim Jasa Sekuriti
PT Kharisma Mitra Sejahtera
PT Kusuma Sandang
PT Mahestra Setia Pradana
PT Manunggaling Rizki Karyatama
PT Pembangunan Jaya Ancol
PT Putra Mataram Sejahtera
PT Sigma Cipta Caraka
PT Telekomunikasi Indonesia
PT Taman Wisata Candi
Pusat Penelitian Kelapa Sawit Medan
Radio Geronimo FM
Radio Prambors FM Solo
Radio Solo Audio Utama
Radio Swaragama FM
Rumah Sakit Bethesda
Rumah Sakit dr. Oen
Rumah Sakit Syaiful Anwar
Saxwood
SENADA
Telkomsel
Tiga Serangkai Inti Korporat
TVRI Stasiun Yogyakarta
UD Sinar Abadi
Vico Indonesia
Yakkum Emergency Unit

Government Institutions

Badan Informasi Daerah DIY
Badan Kepegawaiaan Daerah Provinsi DIY
Badan Kepegawaiaan Nasional Regional I
Badan Pariwisata Daerah DIY
Bank Indonesia Pusat
Bank Indonesia Kupang
Bank Indonesia Yogyakarta
Baperpusda DIY
Bappeda DIY
Bappeda Kab Sleman
Bawasda Inspektorat DIY
BBRSBG Temanggung
Biro Administrasi Perekonomian Sekretariat-
Daerah Provinsi Sulawesi Tengah
BPMPK Kabupaten Kulon Progo
BPPT Kota Tasikmalaya
Dinas Kesehatan Kabupaten Wonogiri
Dinas Kesehatan Kota Yogyakarta
Dinas Pasar Kabupaten Sleman
Dinas Pemuda Olah Raga Kebudayaan dan-
Pariwisata Pemerintah, Kota Magelang
Dinas Pendidikan Kalimantan Tengah
Dinas Pendidikan Kota Padang
Dinas Pendidikan Papua
Dinas Perkebunan Jambi
Dinas Pertanian DIY
Disbudpar Jateng
DISHUBKOMINFO Banjarmasin
DISHUBKOMINFO Kendal
DISHUBKOMINFO Magelang
DISHUBKOMINFO Surakarta
DISNAKER Transmigrasi Semarang
Disperindagkop DIY
DPPKA DIY
Kantor Inkom Gunung Kidul
Kantor Pelayanan Pajak Pratama Bantul
Kantor Perwakilan Bank Indonesia Purwokerto
Kementerian Luar Negeri RI
Kementerian Pendidikan dan Kebudayaan
Kementerian Perhubungan RI
KPDE Jambi
KPDE Kota Yogyakarta
KPDE Kabupaten Pacitan
KPP Kabupaten Sleman
KPPTSP Kabupaten Bangka Barat
Lembaga Penelitian Survey Meter
Pemerintah Kabupaten Bantul
Pemerintah Kabupaten Boyolali
Pemerintah Kabupaten Gunung Kidul
Pemerintah Kabupaten Sleman
Pemerintah Kota Yogyakarta
Pemerintah Provinsi DIY
Pemerintah Kabupaten Bangka Barat
Pemerintah Kabupaten Kendal
Pemerintah Kabupaten Sikka-Maumere
Pemprov Jawa Tengah
Polda Jambi
Polda Kalimantan Selatan
Teknologi Informasi dan Telematika Sekretariat-
Daerah Kota Yogyakarta
The Asia Foundation
Unit Layanan Pengadaan Kabupaten Kudus

Partners



Associations





People, Place and Culture



As a service company, Gamatechno realized that the most important asset for company is human resource. Gamatechno gave big attention on human resource management aspect, workplace, atmosphere quality and corporate culture.

On the human resource management aspect, Gamatechno gave big attention, starting from employee hiring process. Gamatechno prefers young talent who creative, innovative and have great spirit as employee. Gamatechno also give opportunity to employees to join skill development program (both hard and soft skill), mental and career to improve the work quality and loyalty. The employee also get opportunity to obtain further education, skill certification and any other training for potential and best employee

Related to the quality of workplace and working atmosphere, Gamatechno follow unique concept, called "Cool & Fun" office. Most of Gamatechno's employees are young people, so the office was designed with a unique, fresh and fun atmosphere. Not only for employees but also for visiting guests. The office also has various facilities for relaxation and refreshing like gaming devices and sports facilities. Gamatechno also give special facilities to employee for the establishment of hobby club. The name is Club Hobby and it was created to build connections between employee. So, Gamatechno is not just a place to work but also a big family.

In order to create professionalism according to industry standards, Gamatechno builds a corporate culture called "TRUSTED". Every Gamatechno's employee should have the main values of "TRUSTED". The corporate culture of "TRUSTED" makes every employee build trust amongst fellow individuals, companies, customers and partners.

Corporate Value

always be TRUSTED

- Teamwork
- Resourcefulness
- Ultimate Process for Ultimate Quality
- Satisfy our Customer
- Truthfulness
- Excitement
- Dedication



- | | |
|---|-----------------------------------|
| 1. Gamatechno Klub Hobi gtGowes | 5. Gamatechno Klub Hobi gtFutsal |
| 2. Gamatechno Klub Hobi gtGoodminton | 6. Gamatechno Cool Office Jakarta |
| 3. Suasana kerja Gamatechno Wow Office | 7. Gamatechno Fun Rafting |
| 4. Kartini & Kartono Gamatechno - Kartini Day | |

Partnership, Customer Relationship & Corporate Social Responsibility



1. Awarding Clients & Partners in Launching gtSmartCity Solution at Jakarta 2014
2. President Joko Widodo get presentation from President Director Aino, Hastono Bayu about eTicketing Gamatechno at ICE-BSD Tangerang event, 2015
3. ITCC at Universitas Negeri Yogyakarta tahun 2015
Launching eTicketing - TransJakarta 2013
4. Gamatechno Blood Donors, 2015
5. CeBIT Exhibition 2014 -
Hannover, Germany

Gamatechno realized that a company's existence in industry can't regardless of the connection with many parties, not just between company with customers, but also with partners and community. In the connection with customers, Gamatechno puts itself as a partner for help customers' problems and increasing value from the customers. Gamatechno always try to participate and actively engage development of customer community.

Gamatechno also realized that partners is very important and commit to make great product and services to customers. Without partnership, a company can't give maximum role in industry. This situation makes Gamatechno very welcome to collaborate with many parties (both in local and global area), such as research institution, manufacturer, principal, software house, hardware distributor, switching company, financial, institution, network provider, regulator, reseller and many more. Besides Gamatechno also very active in community activities and IT industry associations such as MIKTI, ASPILUKI, INDOGLOBIT and ITS Indonesia.

Besides all of the activity related with customers and partners, Gamatechno realized about company's role in the development of society, which included in an event called Corporate Social Responsibility (CSR). The type of CSR activities which is company's regular agenda such as internship and practical work opportunities for students, scholarships, startup business incubation, IT Career Clinic and society donation.



for more detail product info
please contact us
or visit www.gamatechno.com



PT Gamatechno Indonesia

HEAD OFFICE

Jl. Cik Di Tiro 34 - Yogyakarta 55223
Phone +62 274 5661 61 Fax +62 274 5661 60

JAKARTA OFFICE

Gedung UGM - Samator Pendidikan Lantai 10
Jl. Dr. Sahardjo No. 83 - Tebet, Manggarai
Jakarta Selatan - 12850
Phone +62 21 290 69 516

BALI OFFICE

PT Nata Gama Persada
Jl. Sidakarya no. 192
Denpasar- Bali

info@gamatechno.com